



4.3.1-1
***Institution frequently updates its
IT facilities including Wi-Fi***

4.3.1 Institution frequently updates its IT facilities including Wi-Fi

Descriptions on IT facilities

The IT facilities available in our college can be summarized as follows,

LAN Facility

There are 35 data network switches (Gigabyte), 18 POE network switches for access points, CCTV cameras. 350 Mbps of internet connectivity is shared across the campus, where 100 Mbps is shared for the students.

Server Configurations in Data Center

There are 02 servers with Xeon E-5 version-2, 16 GB RAM, 1.0 TB hard drive, which are served as Domain Controller (DC), Additional Domain Controller and Back up device - 5TB for NPTEL Videos in Digital Library server back up

Workstation

531 desktops are provided to all department labs with configurations of Pentium dual core i3, i5 3 to 11th generation with 2GB, 4GB, 8GB and 16GB, 500GB hard disk with LAN connectivity. 36 desktops with configurations of core i3 4GB, 500GB and dual core 250GB, 2GB hard disks are available to carry out academic and administrative work.

Software's

Windows 2008 server and Windows 2007-2011 multi point server available. We also use open source operating systems such as Fedora, Ubuntu, Sophisticated software like MATLAB, ANSYS, XILINX, MULTISIM, MAST, MASM, CC STUDIO, KIEL, MICROWIND, KICAD, EXPRESS PCB, TURBO C++, JDK8, STAR UML PYTHON, ANAKONDA, WIRESHARK, WEKA, PUTTY, MYSQL, DEV-C++, Auto CAD etc are available.

Printers

24 Laser jet printers, 2 Color Printers 3 Xerox centers and 5 scanners are provided across the campus for academic and administrative purposes.

Updates and up gradation

Updates are maintained regularly through WSUS (Windows Server Update Service) and anti viruses are updated through cloud portal. Ram has upgraded in 67 computers in 1GB to 2 GB.

Wi-Fi

24 Extendable Wi-Fi access points are placed in various places like Library, Corridors, Labs, Hostels, Canteen and Outdoor. Wi-Fi access is provided to all the students which is monitored and controlled by linux server at the IT department for secure content access. All access points are routed to a Wi-Fi controller in the Data Center where configuration and updates are maintained in a centralized fashion.

System Configuration as below

Location (Lab/Room Number)	CPU Company Name	Processor	RAM Type	RAM Size	Hard Disk Size	Total Systems	Year of Purchase	Installed Softwares
107ME(CSE)	ZEBRONICS	i5	DDRIV	16 GB	500(SSD)	60	22-07-22	Python, Anakonda, Wireshark, Weka, Turbo C++, JDK8, Putty, MySQL, Dev-C++
109A(CSE)	DELL	i5	DDRIV	8+8 GB	500 GB	30	17-8-2021	JDK8, Turbo C++, MS-Office
Office & Others	DELL	i5	DDRIV	8+8 GB	500 GB	36	17-8-2021	
LIBRARY	MERQUERY	i3	DDRIII	4 GB	500 GB	20	12-04-19	New GenericLib
109B(CIVIL)	MERQUERY	i3	DDRIII	4 GB	500 GB	30	11-04-19	AutoCAD
214A(CSE)	MERQUERY	i3	DDRIII	4 GB	500 GB	30	11-04-19	Turbo C++, JDK8
214B(CSE)	MERQUERY	i3	DDRIII	8 GB	500 GB	30	11-04-19	Turbo C++, JDK8
314(ECE)	ACER	INTEL® PENTIUM@2.70GHZ	DDRIII	2 GB	500 GB	60	06-05-13	Multisim, Mast, Masm, Mat lab, Cc studio, Kiel, Microwind, Kicad, Express PCB ,xilinx
107(H&S)	ACER&HCL	INTEL® PENTIUM@2.70GHZ, INTEL® CORE 2 DUO@2.80GHZ	DDRII & DDRIII	1GB & 2 GB	500 & 160 GB	30+30	29-10-2012 & 15-6-2009	K-VAN
207-A&B(EEE)	ACER	Intel Pentium CPU G2020 @ 2.90GHZ	DDRIII	2 GB	500 GB	30	29-10-2012	Mat lab, p-spice, E-CAD
213-A(CSE)	ACER, HCL	INTEL® PENTIUM@2.70GHZ, INTEL PENTIUM® @3.20GHZ,	DDRIII	2 GB	500 & 320 GB	15+15	5-6-2013 & 20-05-2011	Turbo C++, JDK8
213-B(CSE)	HCL	INTEL PENTIUM® @3.20GHZ,	DDRIII	1 GB	320 GB	30	20-05-2011	Turbo C++, JDK8
221-A(CSE)	HCL	INTEL PENTIUM® DUAL-CORE@2.70GHZ	DDRII	1 GB	160 GB	30	24-6-2010	Turbo C++, JDK8, Star UML
221-B(CSE)	HCL	INTEL PENTIUM® DUAL-CORE@2.70GHZ	DDRII	1 GB	160 GB	30	24-6-2010	Turbo C++, JDK8, Star UML
110(CSE)	HCL	INTEL® CORE 2 DUO@2.80GHZ	DDRII	1 GB	160 GB	61	15-6-2009	MS-Office, Turbo C++, Latex, Micro flash
Grand Total Systems						567		

Bandwidth of the Internet Connection in the Institution

In the last academic year 2021-22 the Institution has provided 350 Mbps lines for Wi-Fi and LAN access, the administration implemented a strategy of offering Wi-Fi to the whole campus through 24 access points, which would be continuously updated in line with technical improvements.

LAN Facility

Data Network Switches



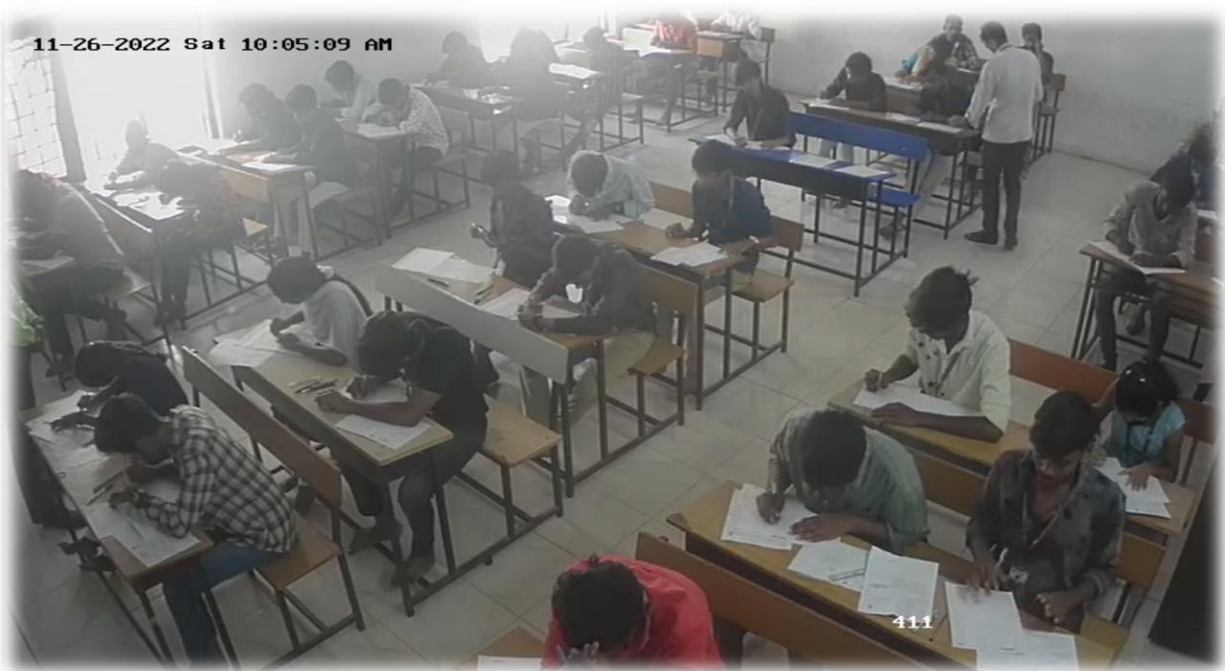
POE Network Switches



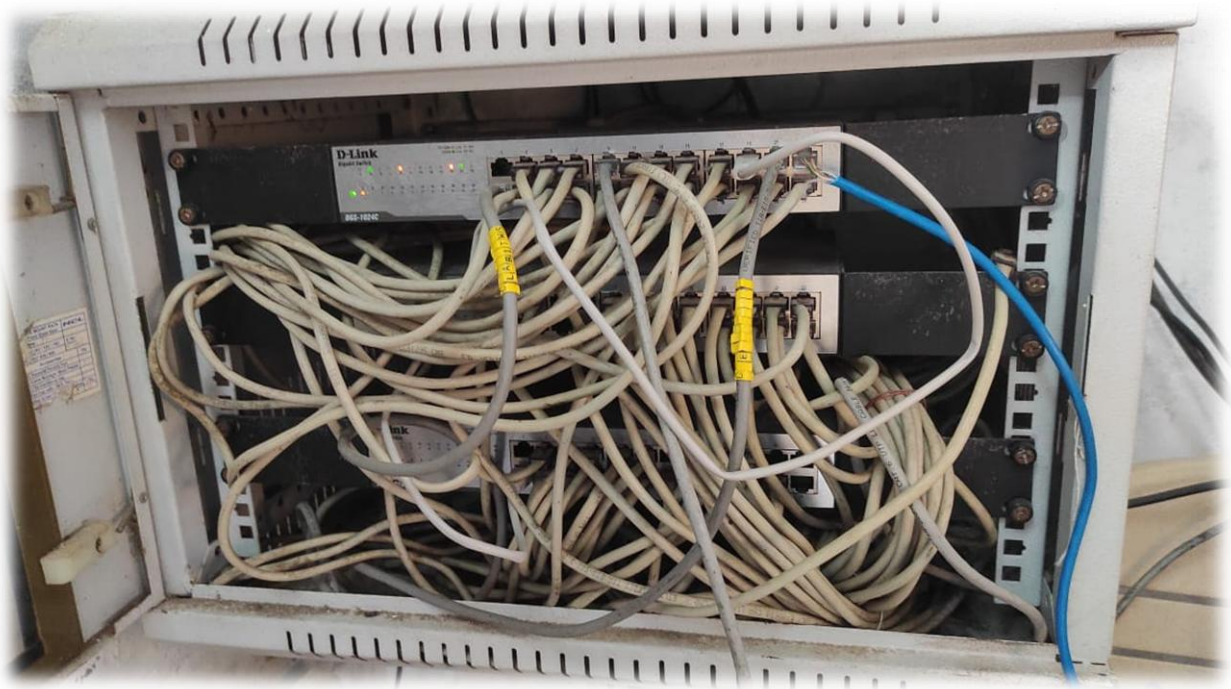
CCTV Cameras



Class Room CCTV Capture



Internet Connectivity and Speed



Internet Speed Test



PRINCIPAL
PALLAVI ENGINEERING COLLEGE
KUNTLOOR (V), ABDULLAPURMET (M),
RANGA REDDY DIST-501 505.

Work Station




Printer and Scanners



Xerox Machines




PRINCIPAL
PALLAVI ENGINEERING COLLEGE
KUNTLOOR (V), ABDULLAPURMET (M),
RANGA REDDY DIST-501 505.

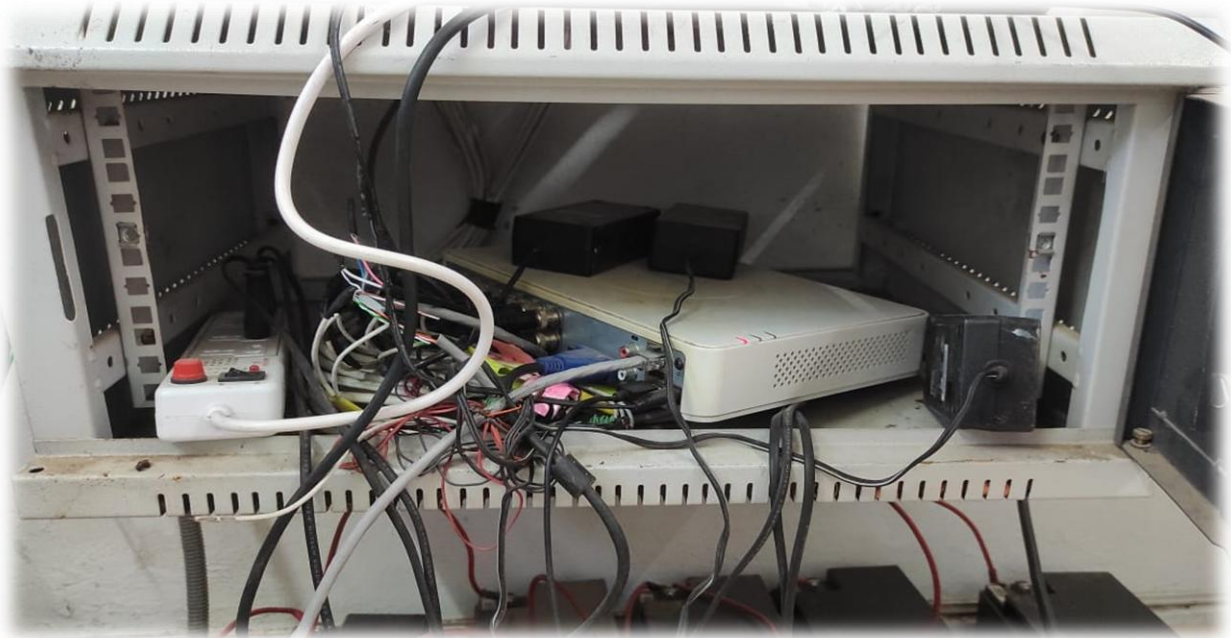
Internet Service Provider -Jio



ISP Point



Wifi Access Distribution Switch



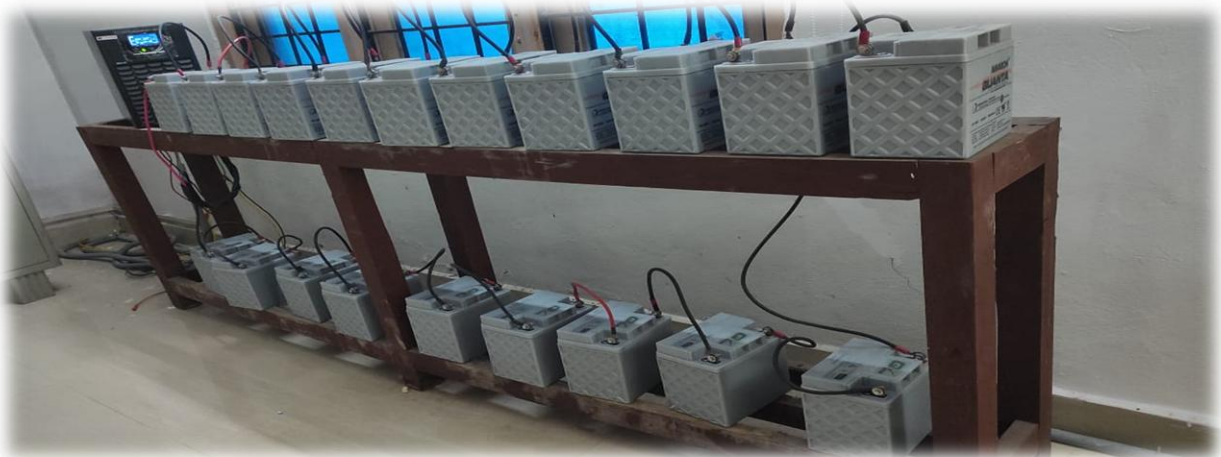
Jio ISP Provider



Online UPS 5 KVA



Batteries



Student Biometric Device



Staff Biometric Device




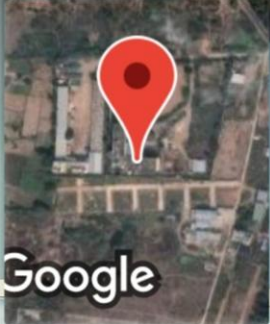
Server




IT LABS



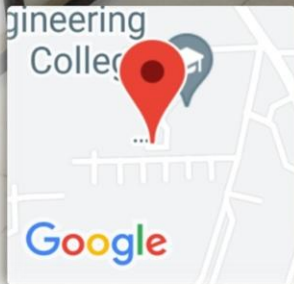
 GPS Map Camera




Hayathnagar_Khalsa, Telangana, India
ACADEMY BLOCK, PALLAVI ENGINEERING COLLEGE,
Jangareddy Colony, Hyderabad, Telangana 501505, India
Lat 17.34962°
Long 78.609101°
22/10/22 02:58 PM GMT +05:30


PRINCIPAL
PALLAVI ENGINEERING COLLEGE
KUNTLOOR (V), ABDULLAPURMET (M),
RANGA REDDY DIST-501 505.

CLASS ROOM WITH STATE-OF-THE-ART ICT FACILITIES



Hayathnagar_Khalsa, Telangana, India
ACADEMY BLOCK, PALLAVI ENGINEERING COLLEGE,
Jangareddy Colony, Hyderabad, Telangana 501505, India
Lat 17.349534°
Long 78.609211°
30/07/22 03:50 PM


PRINCIPAL
PALLAVI ENGINEERING COLLEGE
KUNTLOOR (V), ABDULLAPURMET (M),
RANGA REDDY DIST-501 505.